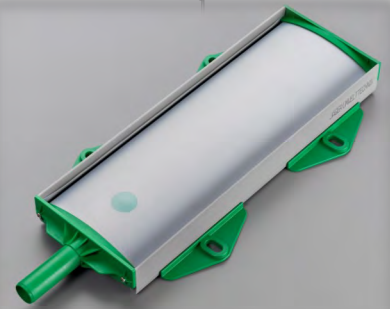


Strip Diffuser

Difusor de burbuja
ultra fina

**Nuevo
Producto**



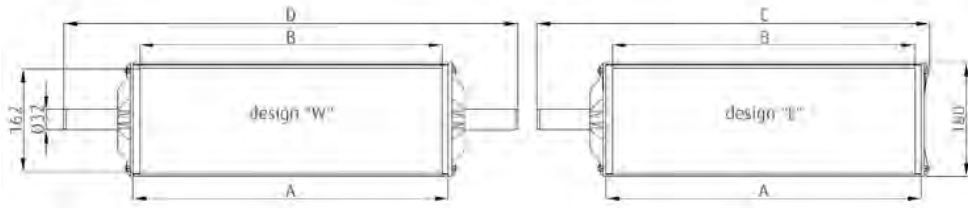
Instalación Real Barmatec

DIMENSIONES

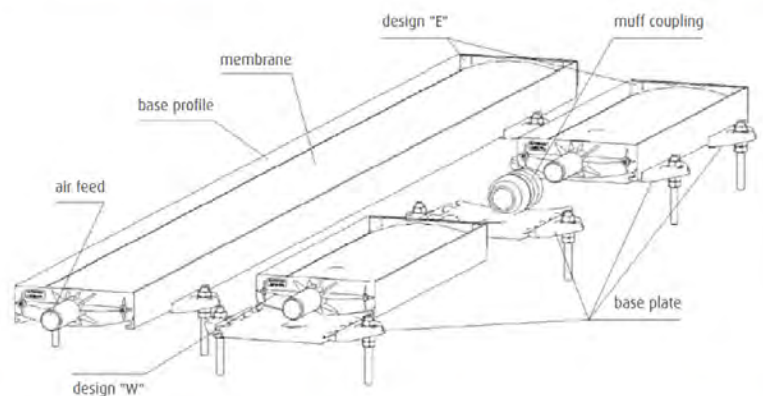
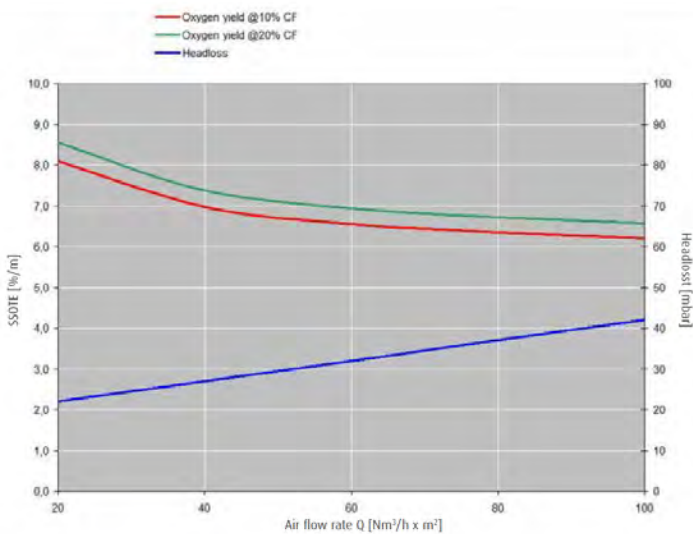
| | A (mm) | B (mm) | C (mm) | D (mm) | Alimentación (mm) | Altura (mm) | Peso (kg) | Área Activa (m ²) | Caudal máximo (m ³ /h) |
|-------------|--------|--------|--------|--------|-------------------|-------------|-----------|-------------------------------|-----------------------------------|
| SD 180/1500 | 1500 | 1480 | 1620 | 1720 | 32 | 53 | 5.0 | 0.24 | 29 |
| SD 180/2000 | 2000 | 1980 | 2120 | 2220 | | | 6.5 | 0.32 | 38 |
| SD 180/3000 | 3000 | 2980 | 3120 | 3220 | | | 10 | 0.48 | 58 |
| SD 180/4000 | 4000 | 3980 | 4120 | - | | | 13 | 0.64 | 76 |

MATERIALES

| | |
|-------------------------------------|---------------|
| Membrana | Poliuretano |
| Perfil base | PVC |
| Alimentación y Válvula antirretorno | PP 30% GF |
| Plato base | PP |
| Uniones roscadas | A4 / AISI 316 |



ESQUEMA DE INSTALACIÓN



BARMATEC

+34 93 878 67 34 barmatec@barmatec.es
www.aireacion.es

ESPECIALISTAS EN SISTEMAS DE AIREACIÓN